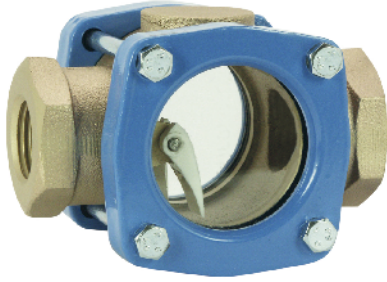


Flow Indicator FK-...GR



- High temperature resistance
- Double-sided large-surface window
- Natural glass
- Visualisation of the flow rate

Characteristics

Mechanical flow indicator for fluid media. A stainless steel flap in the area of flow is lifted by the volume flow, and indicates the present flow rate.

Technical data

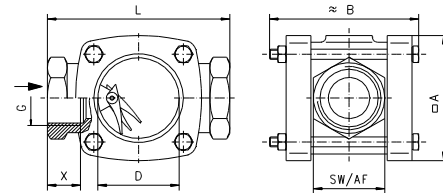
Nominal width	DN 15..50	
Process connection	female thread G 1/2..G 2	
Display range	5..250 l/min	for details see table "Ranges"
Q _{max.}	to 250 l/min	
Pressure resistance	PN 16 bar	
Media temperature	0..+100 °C water -20..+170 °C oil	
Ambient temperature	-20..+100 °C	
Materials medium-contact	cast tin bronze, grey iron, crown hardened glass, Flexicarb with nickel reinforcement, 1.4436, PA 6.6	
Medium	water (oils available on request)	
Weight	see table "Dimensions and weights"	
Installation location	Standard: Horizontal inwards flow from the left; optionally inwards flow from below, installation position affects the range.	

Ranges

G	Approx. inflow rate l/min H ₂ O	Q _{max.} recommended	Types
G 1/2	5	25	FK-015GR
G 3/4	7	40	FK-020GR
G 1	14	60	FK-025GR
G 1 1/2	27	120	FK-040GR
G 2	56	250	FK-050GR

Dimensions and weights

G	Types	L	A	B	D	SW	X	Weight kg
G 1/2	FK-015GR	90	60	74	40	36	14	0.9
G 3/4	FK-020GR							0.8
G 1	FK-025GR	110	76	95	49	43	18	1.6
G 1 1/2	FK-040GR	130	90	116	60	61	20	3.0
G 2	FK-050GR	170	114	138	80	74	25	5.9



Ordering code

FK - 1. 2. 3.
 FK - G R

1. Nominal width	
015	DN 15 - G 1/2
020	DN 20 - G 3/4
025	DN 25 - G 1
040	DN 40 - G 1 1/2
050	DN 50 - G 2
2. Process connection	
G	female thread
3. Connection material	
R	cast tin bronze